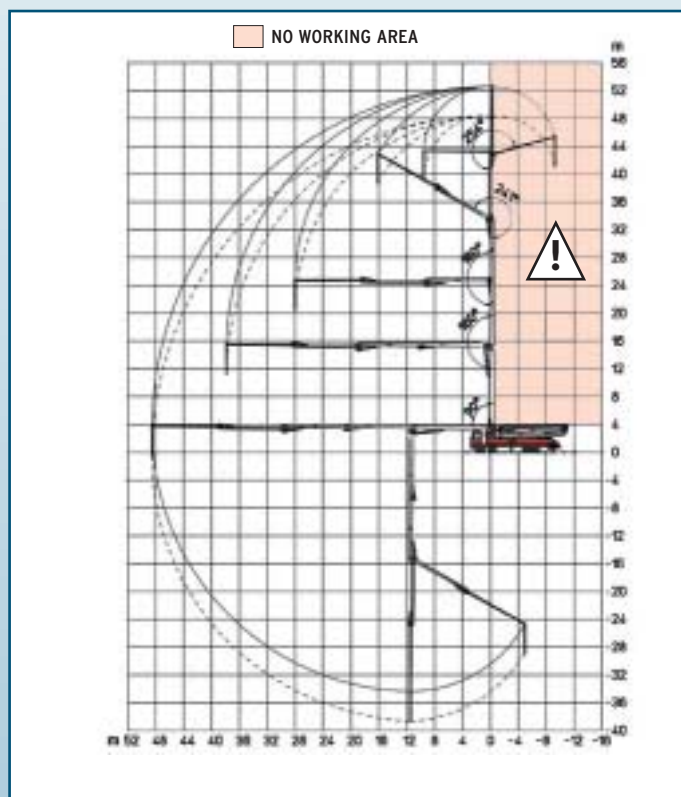
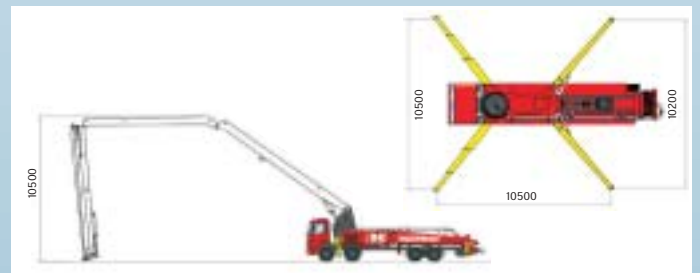


* Variable dimension according to the chassis



MAIN FEATURES

- Boom with welded box section, heads obtained directly by cores.
- High torsion rigidity boom stabilization with integrated front and rear outriggers.
- Steel building with high yield tensile strength and structural check of critical points by means of Finite Elements Method (FEM).
- Compact building, reduced weight.
- High functionality and reliability.
- Low operating costs.



PUMPING UNIT > technical specifications

Model	SCL130A	SCL150AHP	SCL185A
Concrete output (MAX.) m ³ /h*	130	149	184
Concrete pressure bar*	61	76	61
Pumping cylinders (Ø x stroke) mm	230x2000		
Stroke volume	83,09 l		
Numbers of strokes per min.	26	30	37
Max oil pressure	350 bar		
Hopper capacity	600 l		
Output opening	178 mm		

* Rod side feeding

PLACING BOOM technical specifications

Max. height from ground	52,80 m
Max. horizontal reach	48,50 m
Max. downward reach	-38,64 m
Sections number	5
Pipeline diameter	125 mm
Minimum height opening	10,5 m
Flexible terminal hose	4 m
Turret rotation angle	370°
1 st , 2 nd , 3 rd , 4 th and 5 th section opening angles	90°-180° 180°-240°-253°
Opening system	R-Z
Front outriggers	Telescopic diagonal spread
Rear outriggers	Swing spread
Front opening	10,50 m
Rear opening	10,20 m
Max pressure in circuit	380 bar

MAIN FEATURES

SCL CONCRETE PUMP

- System with 2 alternate cylinders and exchange valve
- "S" concrete valve made from an antiwear fusion with different depth, integrated command shaft and fullered profile because of lever command
- Pumping unit provided with automatic lubrication system on the overstraining points
- Automatic system of wears compensation between plate and ring. High wear resistance and max pumping capacity
- Concrete cylinders covered with high resistance and big depth hard chrome
- Chamber made with antiwear steel and an optimal shape to avoid concrete stagnating
- Hydraulic control with automatic sequence, hydraulic driving and continuous power factor correction
- Remote regulation of concrete output, revolutions control, emergency and stop start
- Concrete hopper with high capacity and made of antiwear steel. Mixer shaft with screwed blades
- Field of use: concrete pumping until 1'(K1) slump and max 50 mm size (with Ø 5" pipeline)

PLACING BOOM

- Boom with "RZ" folding type composed of 5 sections in high elastic limit steel, ideal for moving in limited spaces and for working when an high concrete output and a great flexibility in moving are required; 125 mm pipeline
- Hinge points made with double support pin and "Long Life" lubrication
- Hydraulic cylinders made with quick disassembly head without risk of gripping
- Overcenter valves fixed directly on the oil inlet: precise moving and great reliability
- Boom control with proportional distributor to obtain max softness in moving
- Rotation checked by specific reducer for rotation with hydraulic unblocking brake and by block valves plus antishock valves
- Outriggers with front "X" opening and rear swing-out opening with separated driving on both machine sides. Position kept by hydraulic valves
- All controls are made according to conformity of 98/37/CE and UNI EN 12001 concerning safety and wealth

ASSEMBLY on vehicle

4-axes chassis with short cab	Wheelbase 6.300/6.500 mm
5-axes chassis with short cab	Wheelbase 5.800/5.900 mm
Total mass on ground	Ton. 43,2

STANDARD EQUIPMENT

- | | |
|--|--|
| <ul style="list-style-type: none"> ▪ Proportional radio remote control provided with double speed in boom moving, automatic free frequency research, manipulators with 8 positions and output variator ▪ Proportional emergency remote control and serial cable ▪ Hydraulic pumps with variable displacement and constant capacity adjuster ▪ Boom hydraulic pump with variable displacement and "Load Sensing" adjuster ▪ Gear hydraulic pumps for service purpose ▪ Safety block-out at the opening of tank outlet hatch and hopper grid ▪ Pressure gauges and mini flexibles set to supervise the pressure ▪ Electric vibrator on hopper grid and push-button control panel at distance | <ul style="list-style-type: none"> ▪ Membrane or Lobe Water pump 75 l/1', 30 bar ▪ Water tank in the rear boom stabilizations, capacity 1100 l ▪ Heat exchanger with hydraulically controlled fan ▪ N.1 light projector ▪ Basket for accessories on the hopper side ▪ Plates for outriggers support and housing with safety lock ▪ Switchboard completely protected on the right side ▪ Little ladder to reach the footboard for check and maintenance ▪ Tool kit for machine cleaning and maintenance ▪ Outriggers lighting system ▪ Portable inspection lamp ▪ Locked up tool compartments on both machine sides ▪ Flashing magnetic base lights to be positioned on the outriggers |
|--|--|

ACCESSORIES ON REQUEST

- | | |
|---|---|
| <ul style="list-style-type: none"> ▪ Concrete double wall pipeline with tempered core ▪ Additional light projector on hopper ▪ Kit high pressure ▪ Automatic reverse Kit for mixer rotation ▪ Pipeline kit for pumping on the ground ▪ Multi-level water pump | <ul style="list-style-type: none"> ▪ Automatic release of terminal hose ▪ Spare pipe holder on the rear arms or as an alternative on the frame ▪ High pressure water pump with fan-shaped hose nozzle ▪ Atomizer 16 litres, 8 bar ▪ Compressor for pipeline cleaning ▪ Aluminium cover for hopper |
|---|---|



SERMAC S.p.A.
 Via Como, 3
 20054 Nova Milanese (MI), Italy
 Phone +39 0362 364320
 Fax +39 0362 364598
 www.sermacspa.com
 sermac@sermacspa.com

